

# MGE Galaxy PW

Three Phase UPS

100 / 130 / 150 / 180 / 200 / 225 kVA



**Performance 3 Phase Power Protection with Adaptability to Meet the Unique Requirements of Small to Medium Datacenters, Building and Facilities**

- > Flexible and very adaptable
- > Strong electrical features
- > Intuitive monitoring
- > Parallel capable Output
- > High availability architectures components

# MGE Galaxy PW Redefining Power Quality

## Simple and secure paralleling technology

- > Paralleling technology for redundancy or capacity simply by using the output of the modules together
- > Up to 3 modules paralleled for capacity
- > Up to 4 modules for redundancy
- > Easy cable landing facilitated by a system level wrap around maintenance bypass
- > System level maintenance bypass provided
- > Internal maintenance bypass on each UPS module

*No additional paralleling gear required!*



## Upgradeable Power Levels

- > Field upgradeable up to 225 kVA
- > Extra power needed provided without the expense of added equipment or installations costs

## User Friendly Interface

A black-lit, wide-angle graphic display allows clear messages presenting detailed information on diagnostics and UPS status

- > Event log for all alarms and events including UPS and battery lifecycle data
- > LED Mimic Diagram
- > Battery and UPS Cycle Monitor
- > Self Diagnostic Report



# MGE Galaxy PW Features

## Critical Bus Synchronization

The CBS module keeps the outputs of 2 UPS modules in sync with each other under all operating conditions

- > The ideal solution for architecture requiring a very high degree of availability: Epsilon STS
- > A dual-supply server supplied via 4 different routes
- > Redundancy ensured at every level: PDU, Epsilon STS, UPS and synchronization module

## Generator Friendly Technology

- > Leading power factor limited on the input
- > Need for costly generator oversizing eliminated
- > Common UPS generator culpability issues eliminated
- > Passive Inductors / Caps, no hard switching of capacitors to maintain lagging / near lagging power factor
- > Low THDI, no excessive heating / de-rating of alternator

## Parallel Systems

- > System Bypass Cabinet
- > 350, 700 and 1200A CBs available (key interlock standard)
- > Remote installation only (non-matching dimensions)
- > System level power monitoring only included

## Integrated Battery Diagnostics

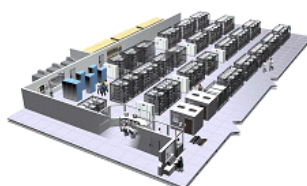
- > Integrated battery diagnostic system
- > Periodic battery health test automatically performed
- > Operators alerted before irregularities to have a chance to affect UPS performance

## Digital Power Quality Management

- > Digital Power Quality technology
- > Output wave form compared to a computer simulated wave form
- > Any imperfections immediately corrected using tiny sub-cycle pulses
- > A pure sine wave output maintained under all load conditions

## Communications

- > Dry Contact Relay Card (5 dry contacts) standard
- > Network Management Card (SNMP)
- > RS485 / RS232 Serial Communications Card
- > MultiSlot Communications Card Expander
- > IBM AS/400 Volt-Free Contact/Remote Power off Card



# Technical characteristics

| UPS Rating kVA/KW                               | 100/90  | 130/117 | 150/135 | 180/162 | 200/180 | 225/202.5 |
|---|---|---------|---------|---------|---------|-----------|
| <b>Input</b>                                    |   |         |         |         |         |           |
| Voltage (V)                                     | 208V, 480V, 600V 3 Phases , 3 W + G ( or 4 W + G for Bypass ) |         |         |         |         |           |
| Frequency (Hz)                                  | 60 Hz (+-10%)   |         |         |         |         |           |
| Nominal Input Current at 208V (A)               | 312   | 415     | 485     | 600     | 692     | 692       |
| Input THDI                                      | < 7.5% at 225 kVA   |         |         |         |         |           |
| <b>Output</b>                                   |   |         |         |         |         |           |
| Voltage   | 208V, 480V, 3 phases, 3 W +G or 4 W +G                        |         |         |         |         |           |
| Power Factor                                    | > 0.9   |         |         |         |         |           |
| THDV (linear loads)                             | < 1.5% Ph/Ph, < 2.0% Ph/n                                     |         |         |         |         |           |
| THDV (non-linear loads)                         | < 2.0% Ph/Ph, < 3.0% Ph/n                                     |         |         |         |         |           |
| Voltage Transient Response (at 100% Step Load): | +/- 2%  |         |         |         |         |           |
| Nominal Output Current at 208V (A)              | 279   | 362     | 418     | 501     | 556     | 625       |
| Inverter Overload Capacity (A)                  | 150% for 1 min.; 125% for 10 min                              |         |         |         |         |           |
| <b>Bypass</b>                                   |   |         |         |         |         |           |
| Bypass Instant Overload (1 cycle):              | 22 times nominal current                                      |         |         |         |         |           |
| <b>Overall efficiency</b>                       |   |         |         |         |         |           |
| Systems Efficiency at 100 %                     | 92,5%   | 93%     | 93%     | 93%     | 93,5%   | 93,5%     |
| Full Load Heat Rejection (BTUs)                 | 40,185  | 49,661  | 57,301  | 68,762  | 72,477  | 73,383    |
| <b>Environmental</b>                            |   |         |         |         |         |           |
| Operating Temperature                           | UPS: 0° to 40°C (32°F to 104°F)                               |         |         |         |         |           |
| Non-Operating Temperature                       | -20°C to +45°C (-4°F to 113°F)                                |         |         |         |         |           |
| Relative Humidity                               | 0 to 95% non-condensing                                       |         |         |         |         |           |
| Audible Noise (dBA)                             | 68  |         |         |         |         |           |
| <b>Dimensions and Weights</b>                   |   |         |         |         |         |           |
| UPS Module Weight (lbs)                         | 3050  |         |         |         |         |           |
| Module Dimensions                               | 75"H x 33" D x 48" W  |         |         |         |         |           |

